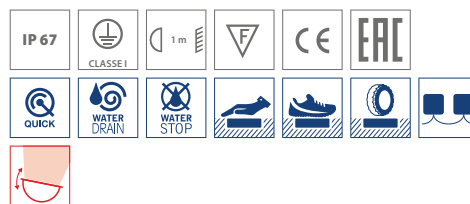


CRICKET 168+/268+ COMPACT

design by SILVIA PAOLA PENNACCHIO



- AN-96 / Anthracite gray / Textured
- INOX / Stainless steel / Matt

Range of class I reduced depth in-ground luminaires, comprising:

- Black painted anodised die-cast aluminium housing
- Flat toughened glass diffuser
- High-transparency polycarbonate lenses for best light transmission
- Anti-ageing silicone gasket
- Die-cast aluminium trim painted after chemical preparation of the surface coated with AISI 316 stainless steel (versions INOX)
- Die-cast aluminium trim painted
- Mains connection device WATER STOP
- The LED versions use high power LEDs mounted on an aluminium heat sink
- Stainless steel external screws
- Technopolymer outer casing equipped with reinforcement bars to ensure traffic resistance. Designed to encourage water drainage through the WATER DRAIN system
- Floor mounted luminaires are subject to harsh conditions during use. For proper function and safety, they must be correctly installed by qualified personnel and according to the installation instructions
- Do not install luminaires in sunken areas
- If the luminaire is accessible to the public, ensure that the temperature of the glass, specified on the side of every version, is compatible with the pertinent local

installation standards

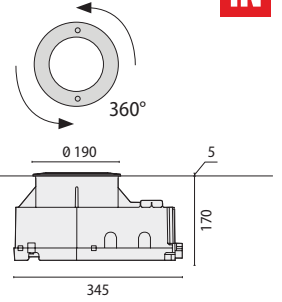
- Rough-in kit fixing system designed for a safe installation even when it is not perfectly flush with the floor
- On request, it is possible to have versions with a precision-cast stainless steel ring.





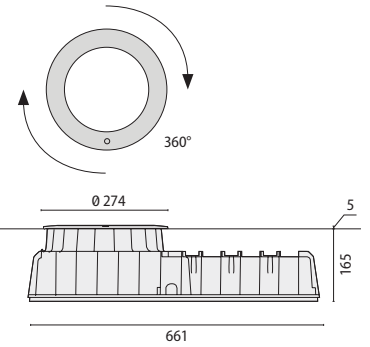
CRICKET 168+
COMPACT
LED C/I

CRICKET 168+
COMPACT
LED ELL

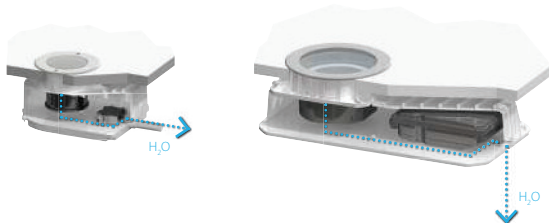
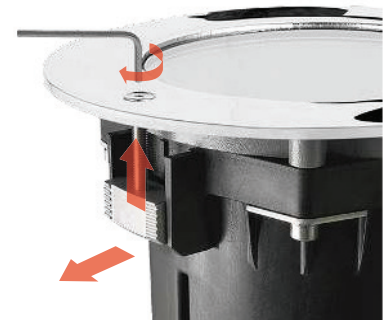
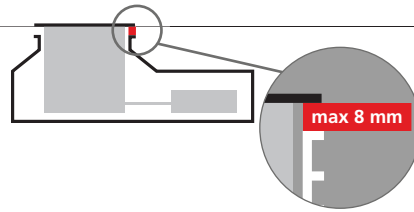


CRICKET 168+
COMPACT
LED C/I

CRICKET 168+
COMPACT
LED ELL



Precision-cast stainless steel trim (on request)



The COMPACT versions provide the perfect solution for installation into shallow depths, providing drainage by means of the specially developed shape of the outer housing to an outflow pipe.



The luminaires are designed to prevent any humidity and condensation inside the luminaire bodies that way occur under particular thermal conditions.

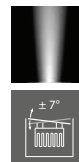


The QUICK versions allow quick installation of the product. They are supplied with lamp assembled, and with WaterStop device. It is therefore not necessary to open the luminaire, but simply connect external power to have a working luminaire.

CRICKET 168+ COMPACT LED C/I

IK09 16J xx7

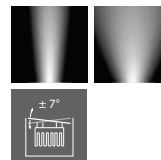
LAMPHOLDER	WATTAGE	CLASS	CRI	KELVIN	COS Φ $\geq 0,9$	OPTIC	OPTIC BEAM	LIGHTSOURCE LUMEN OUTPUT	LUMINAIRE LUMEN OUTPUT	L	B	LIFETIME	COLOUR/ RAL	PART NUMBER
Power LED 220-240 V 50/60 Hz														
LED	10 W	I		70 6000		C/I	-	600 lm	345 lm	80	10	50000 h	●	06036596
LED	10 W	I		85 3000		C/I	-	540 lm	193 lm	80	10	50000 h	●	06036696
LED	10 W	I		70 6000		C/I	-	600 lm	345 lm	80	10	50000 h	●	06036904
LED	10 W	I		85 3000		C/I	-	540 lm	193 lm	80	10	50000 h	●	06037004



CRICKET 168+ COMPACT LED ELL

IK09 16J xx7

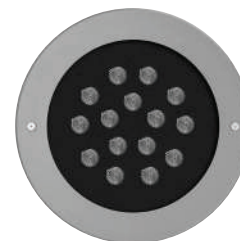
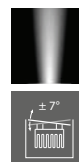
LAMPHOLDER	WATTAGE	CLASS	CRI	KELVIN	COS Φ $\geq 0,9$	OPTIC	OPTIC BEAM	LIGHTSOURCE LUMEN OUTPUT	LUMINAIRE LUMEN OUTPUT	L	B	LIFETIME	COLOUR/ RAL	PART NUMBER
Power LED 220-240 V 50/60 Hz														
LED	10 W	I		70 6000		ELL	10°x50°	600 lm	327 lm	80	10	50000 h	●	06036796
LED	10 W	I		85 3000		ELL	10°x50°	540 lm	192 lm	80	10	50000 h	●	06036896
LED	10 W	I		70 6000		ELL	10°x50°	600 lm	327 lm	80	10	50000 h	●	06037104
LED	10 W	I		85 3000		ELL	10°x50°	540 lm	192 lm	80	10	50000 h	●	06037204



CRICKET 268+ COMPACT LED C/I

IK10 21J xx9

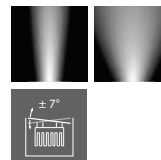
LAMPHOLDER	WATTAGE	CLASS	CRI	KELVIN	COS Φ $\geq 0,9$	OPTIC	OPTIC BEAM	LIGHTSOURCE LUMEN OUTPUT	LUMINAIRE LUMEN OUTPUT	L	B	LIFETIME	COLOUR/ RAL	PART NUMBER
Power LED 220-240 V 50/60 Hz														
LED	21 W	I		65 6000		C/I	-	1500 lm	1063 lm	80	10	50000 h	●	06037396
LED	21 W	I		85 3000		C/I	-	1350 lm	854 lm	80	10	50000 h	●	06037496
LED	21 W	I		65 6000		C/I	-	1500 lm	1063 lm	80	10	50000 h	●	06037704
LED	21 W	I		85 3000		C/I	-	1350 lm	854 lm	80	10	50000 h	●	06037804



CRICKET 268+ COMPACT LED ELL

IK10 21J xx9

LAMPHOLDER	WATTAGE	CLASS	CRI	KELVIN	COS Φ $\geq 0,9$	OPTIC	OPTIC BEAM	LIGHTSOURCE LUMEN OUTPUT	LUMINAIRE LUMEN OUTPUT	L	B	LIFETIME	COLOUR/ RAL	PART NUMBER
Power LED 220-240 V 50/60 Hz														
LED	21 W	I		65 6000		ELL	10°x50°	1500 lm	963 lm	80	10	50000 h	●	06037596
LED	21 W	I		85 3000		ELL	10°x50°	1350 lm	735 lm	80	10	50000 h	●	06037696
LED	21 W	I		65 6000		ELL	10°x50°	1500 lm	963 lm	80	10	50000 h	●	06037904
LED	21 W	I		85 3000		ELL	10°x50°	1350 lm	735 lm	80	10	50000 h	●	06038004

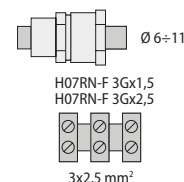
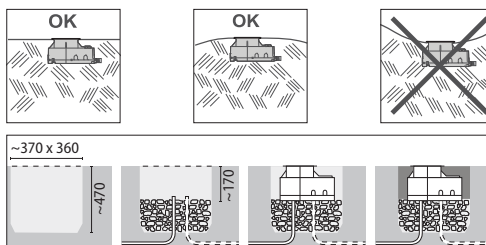


CRICKET 168+ COMPACT

 **max 3,2 kg**

 **max 30 km/h**
max 6.000 kg

max 2.000 Kg
 **5 kN**
50 Nm

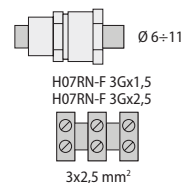
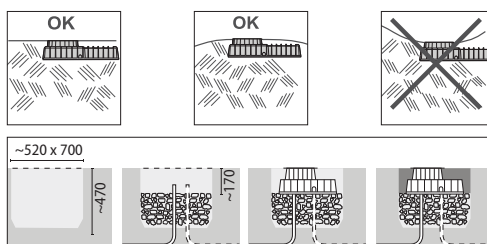


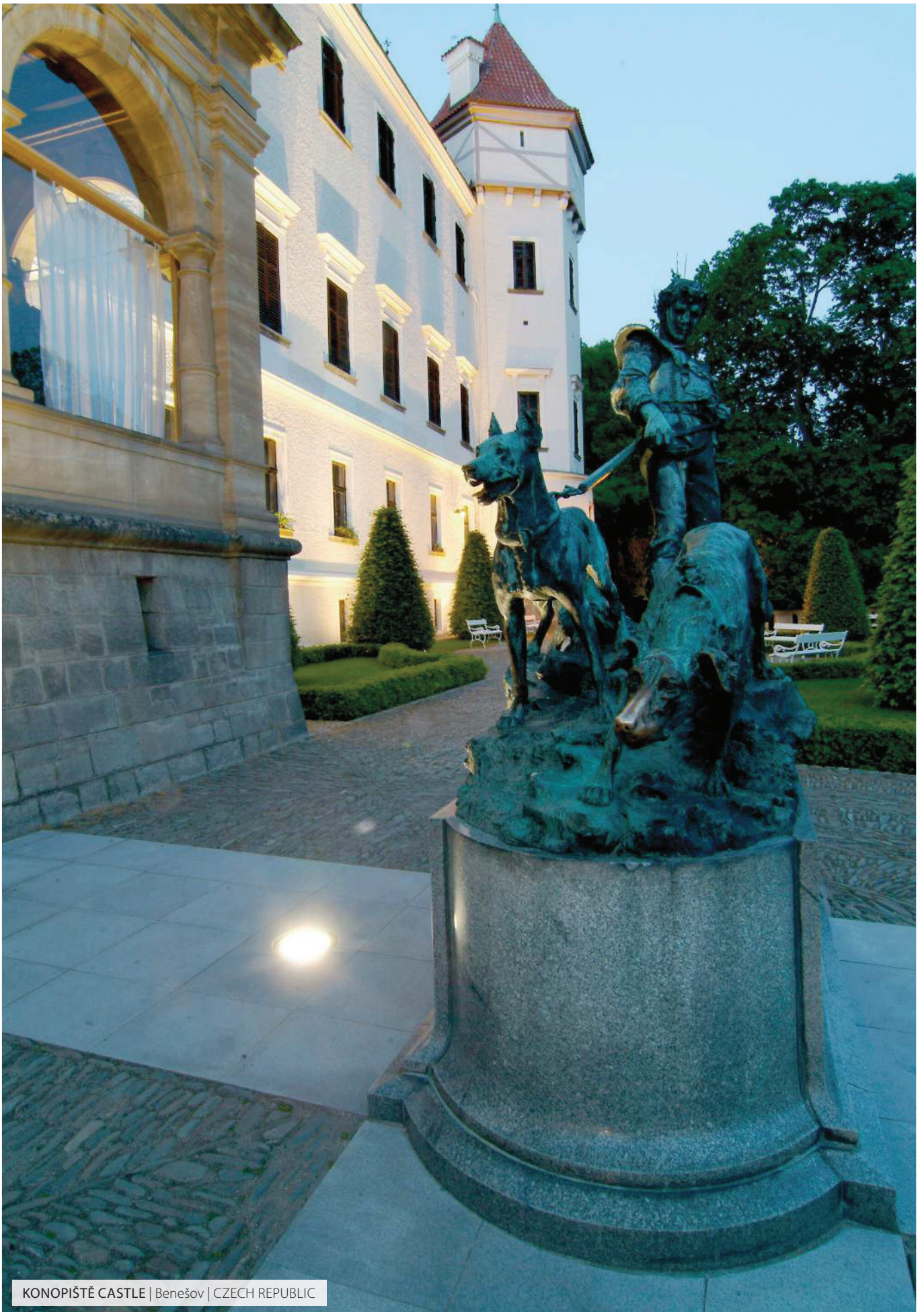
CRICKET 268+ COMPACT

 **max 11,6 kg**

 **max 30 km/h**
max 7.500 kg

max 2.000 Kg
 **5 kN**
50 Nm





KONOPIŠTĚ CASTLE | Benešov | CZECH REPUBLIC